



# Around the Ranch

Click here to donate online:



Summer 2009

Volume 37, Issue 2

## Easy Ways to Help Alpha's Kids:

- Pray for the kids, staff, and Alpha's mission.
- Save General Mills Box Top Symbols for Alpha to redeem for cash—10¢ each! This helps purchase school curriculum for the kids and other needs.
- Save Best Choice UPC Symbols for Alpha to redeem for cash—3¢ each.

## Five Minute Video Now On The Web!



We now have our five minute video available for viewing on our website homepage. You will see footage of our mission and the precious children that we serve with your help. Be sure to check it out!

You can find the video player posted at [www.alphachristianchildrenshome.com](http://www.alphachristianchildrenshome.com).

The video will load quickly unless you have an older or slower computer. ▶▶▶▶

Jeff Mulpas has been excited to travel extensively over the past several months in an effort to continue getting all of our friends up to date on the latest news and plans underway for Alpha's mission for children. ***If you would like to have Jeff speak with you or your church / group, please give him a call in our office.***

***Also if you would like a DVD copy of our video mailed to you, just let us know!***

## Volunteers Make A Difference!

Volunteers have been making a big difference at Alpha this year! We have been so blessed by those who have come to tackle projects that we have



including building a new kitchen and bathroom in the kids' school area, planting a garden, building strawberry beds, and doing dry-



***In May, twenty-four members of the Greater Kansas City Chinese Christian Church came to undertake several projects,***



slated, as well as to spend quality time with our kids while here. These volunteers have also provided the materials needed for the many projects.



wall/painting work in the Hope House residence. They also spent a great deal of time with the children which was such a blessing! Thank you so much, dear friends!!

## Inside this issue:

Honor Roll Achievement	2
More Volunteers Make A Difference	2
Kids & Concrete	2
Memorials	3
Birth of Ava Kincaid	3
Pantry List	4
Special Needs	4
Open House Scheduled! October 3, 2009	4

**Around the Ranch**

**Alpha's Honor Roll Students**



Pictured above: The kids took a break from their studies in school to race some balloons around the classroom floor together. Once they hit the finish line, they popped the balloons and retrieved the treat hidden inside!

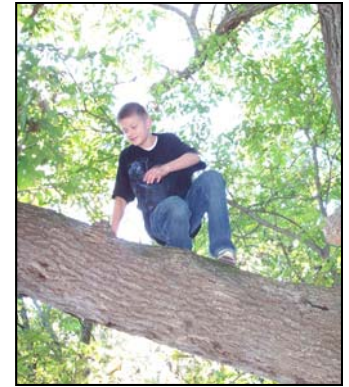
**Congratulations to Kane, Payton, & Emma who worked extra hard in school and achieved Honor Roll at the end of the school year!**



Pictured left: Kane, Kiki, and Payton play quietly together while waiting to be let out of school at the end of the day.

Above: Emma is holding one of the new baby goats.

Below: Payton enjoys a good tree climbing expedition. . . and boy, does Alpha have plenty of trees to choose from!



**More Volunteers Make A Difference!**

*Pure and genuine religion in the sight of God the Father means caring for orphans and widows in their distress and refusing to let the world corrupt you.*

**James 1:27 NLT**

Over Spring Break this year, we had **a terrific group of families come up from the Westlink Christian Church in Wichita, Kansas, on a short-term missions trip** to spend a week with our kids and undertake some big projects that were planned. They built a storage shed at the



fire pit out in the woods for use in fellowship & worship time. In the walkout basement of the Alpha House residence, we are planning an area to host volunteers and/or interns. Westlink volunteers did dry-



wall work, painted the walls, replaced the sagging drop ceiling, and installed a new kitchen for that new area!

These wonderful Christian people did so much to help us continue providing the best facilities and environment possible for the children. Thank you, friends in Christ!!



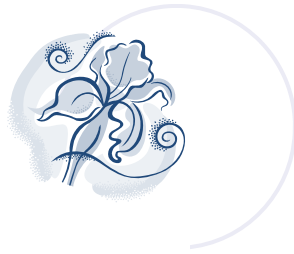
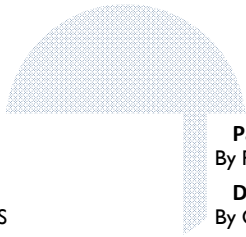
Hope House residence, laid three concrete pads in front of the entrances to the school building, did yard & brush clearing work, and helped us build a



Below, our kids were thrilled to be given the opportunity to place their handprints in the leftover concrete!



# Memorial Gifts



Volume 37, Issue 2

**Marvin Bell**

By Lena Bell, Clovis, NM

**Kirby & Katherine Berends**

By Carol Woodruff, Englewood, KS

**Pat Berry**

By Circle I Ladies, Clay Center, KS

**Charles Black**

By Donald & Jean McMillin, Johnson, KS

**Marjorie Botkin**

By Edna Higley, Lancaster, KS

**Charles & Claude Boyd**

By Grace A Boyd, Lawrence, KS

**Charles Brison, Jr.**

By Juanita Brison, Grandview, MO

**Charles Brison, Sr.**

By Juanita Brison, Grandview, MO

**Gary Buchan**

By Sandy Ferguson, Pueblo, CO

**Hiram Cassel**

By Soldier Christian Church, Soldier, KS

**Jeremy Elliott**

By Terry & Marjorie Freeman, Tonganoxie, KS

**Marjorie Eubank**

By Donald & Jean McMillin, Johnson, KS

**Family & Friends of LeRoy Christian Church**

By CWF, LeRoy, KS

**James Gustafson**

By Jim & Pauline Gustafson, Park Falls, WI

**Horrace E Hewett**

By Ruth Hewett, Wichita, KS

**Candace Hungerford**

By Lorena Clayton, Wichita, KS

**Loyd Hyde**

By Tommie Hyde, Kiowa, KS

**Marvin Knipp**

By Dorothy M Schafer, Holton, KS

**Kenneth & Agnes Lagree**

By David & Janet Wright, Tucson, AZ

**Ann Lee**

By Maureen Palmquist, Bel Aire, KS

**Josiah Luckerth**

By Lyle & Marcena Stallbaumer, Seneca, KS

**James E Martin**

By Betty L Martin, Tarkio, MO

**Forrest McClary**

By Lyle & Marcena Stallbaumer, Seneca, KS

**Pauline Newell**

By Ron & Paula Ellis, Meriden, KS

**Darold Nies**

By Captain Handy, Auburn, NE

**Our Parents**

By Bob & Maxine Robertson, Richards, MO

**Gene Parnell**

By Joan Parnell, Mountain Home, AR

**Clovis Phinney, Jr.**

By Beulah Mae Carter, Hugoton, KS

**Gladys I Robison**

By Eva Bergren, Kiowa, KS

**James E Robison**

By Eva Bergren, Kiowa, KS

**Beth Skinner**

By Bill & Betty Bunce, Linwood, KS

**Elsie (Geer) Smith**

By Sylvia Palmer, Vona, CO

By Lila Taylor, Stratton, CO

**James R Stout**

By Peggy A Stout, Kokomo, IN

**Marvin L Tate**

By Mrs. Marvin L Tate, Abilene, KS

**Jimmie Teets**

By Pauline Childers, Topeka, KS

**Caroline Tennyson**

By Mike Tennyson, Lawrence, KS

**Lee & Blanche Tribble**

By Beverly Keehn, Soldier, KS

**Darlene Dixie Unruh**

By Janet L Adams, Wichita, KS

**Eve Vaughn**

By Pleasant Valley Club, Wakarusa, KS

**Dorcas Welch**

By Marie Allen, Topeka, KS

**Owen Wilmot**

By Ada Andersen, Blair, NE

**Mary Ann York**

By Lyle & Marcena Stallbaumer, Seneca, KS

**Unspecified Memorial Gifts**

By Fowler Christian Church, Fowler, KS

By Frank Evans, Ozawkie, KS

By Max Firebaugh, Mount Vernon, IL

By Phillip T Pond, Topeka, KS

By Roy & Judy Smetzer, Big Prairie, OH

By Richard & Jeanette Volk, Clarkdale, AZ

*And the King will say, "I tell you the truth, when you did it to one of the least of these my brothers and sisters, you were doing it to me!"*

**Matthew 25:40**

*\*\*\*Thank you for helping to create precious childhood memories in the lives of needy children at Alpha with your Gifts in support of them! Your gifts will bless the children with a safe home & family, a spiritually strong environment, and those loving childhood memories that they so need and long for.*

**DONATE**  
using Just Give

## Ava Kincaid Born January 2009

For those of you who have followed Michelle (Snavely) Kincaid since she was a child, we are pleased to announce the birth of her daughter, Ava Hope Deserea Kincaid, on January 27, 2009. Michelle is the Executive Director for the Alpha Christian Children's Home & School, and her husband, Shawn, is a full-time master electrician for a local electrical contractor.





Where love heals hurting hearts . . .

15017 27th Street, PO Box 727, Perry, Kansas 66073-0727

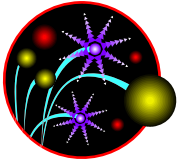
E-mail: [office@alphachristianchildrenshome.com](mailto:office@alphachristianchildrenshome.com)

Website: [www.alphachristianchildrenshome.com](http://www.alphachristianchildrenshome.com)

Telephone/Fax: (785) 597-5235

Nonprofit Org.  
U.S. Postage  
**PAID**  
Lawrence, Kansas  
66044  
Permit #49

## Summer 2009



## Pantry List

Eggs, Syrup, Bread, Fresh Milk, Evaporated Milk, **Breakfast Cereals**, Oatmeal, Fruit Juices, Fresh Fruit (grapes, oranges, apples, bananas), Frozen Fruit (blueberries, cherries, peaches), Fresh Vegetables (corn on the cob, celery, carrots, potatoes, onions, lettuce, tomatoes), Frozen Vegetables, **Can Fruit**, **Meat**, Block Cheeses, Shredded Cheddar & Mozzarella, Sliced American & Swiss, Cream Cheese, Lunch Meats, Lunch Snacks & Drinks, Ramen Noodles, Hamburger & Chicken Helpers, Chili, Soup Crackers, Pickles, White Vinegar, Light Mayonnaise, Ranch & Italian Dressings, BBQ Sauce, Worcestershire Sauce, Olive Oil Cooking Spray, Olive Oil, Margarine, Shortening, Frosting, Powdered Sugar, **Granulated Sugar**, Spices, Original Mrs. Dash, Spaghetti Sauce, Alfredo Sauce, Sloppy Joe Sauce, Mushrooms, Olives, "Cream of" Soups, Velveeta, Tortillas, Taco Shells, Kool-aid, Instant Tea, Tea Bags, Coffee, Coffee Creamer, Flavored Creamers.

**Liquid Hand Soap**, Shaving Cream or Gel, Shampoo, Conditioner, Zip Lock Bags – snack, sandwich, quart & gallon size, Plastic Wrap, Size 13 & 39 Gallon Trash Bags, **Toilet Paper**, **Kleenex**, **Paper Towels**, Napkins, Disposable Plates, Sponges, Pledge, Lysol, Windex, Pinesol, Ajax, Dishwasher Soap, Fragrance & Dye Free Laundry Detergent, Bleach, Dryer Sheets, Toilet Cleaner, Size 2, 3 & 4 Diapers.



## Special Needs

- Cooking, Baking, & Storage Dishes for New Kitchen Area in the Kids' School Building—call or e-mail for list.
- Kitchen Aid Mixer—\$200
- 2 Gas Grills for Cooking Out
- Laminate or Hardwood Flooring & Carpet for Hope House Residence - 1,850 sq. ft.
- Sliding Tub/Shower Doors—\$200
- Cordless Hammerdrill, Cordless Sawzall, Welder, Table Saw, Handtools, Long Levels
- Treadmill and/or Elliptical Trainer Exercise Equipment
- Car Hauler Flat Bed Trailer
- Pickup Truck

NOTE: If we should have any amount of funding left over from your support for a particular project, we will absolutely use it toward the many other needs of the children.

## Fall Open House

October 3, 2009

You are invited  
to come!

RSVP is encouraged.



## 2009 Totals

General Mills Box Tops:  
5,800 x 10¢ each = \$580.00

Best Choice UPC Symbols:  
7,000 x 3¢ each = \$210